

NX 300h Self-Charging Hybrid





[www.lexus.eu/nx](http://www.lexus.eu/nx)

In this brochure we invite you to prepare for the excitement of choosing your new Lexus NX 300h. Showcasing the latest in Lexus design, the new NX 300h features a bold 'spindle grille' with stylish smoked chrome details and sporty LED headlights.

You will find the NX 300h a great pleasure to drive, with a chassis that delivers impressive urban agility.

The cockpit of the new NX 300h is more refined than ever. The large 10.3-inch multi-information display is easy to read, and intuitive to control via a large central Touch Pad device. Ultra-precise leather stitching and finely machined switchgear give the cabin an air of modern elegance and refinement.

The NX 300h is equipped with our latest Lexus Safety System + that now includes a Pre-Collision System with pedestrian detection at night and bicycle detection during daytime.

For a more dynamic experience, you can choose the new NX 300h F SPORT featuring exclusive Jet Black mesh grille, more responsive suspension, F SPORT interior and distinctive new wheels.





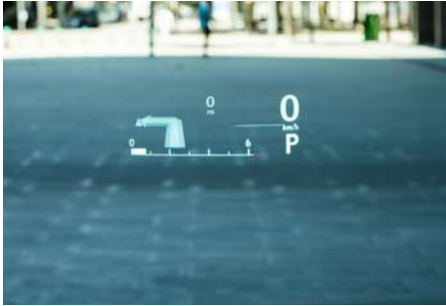
**01. MODEL**  
Pages 04-07



**02. GRADES**  
Pages 08-09



**03. FEATURES**  
Pages 10-11



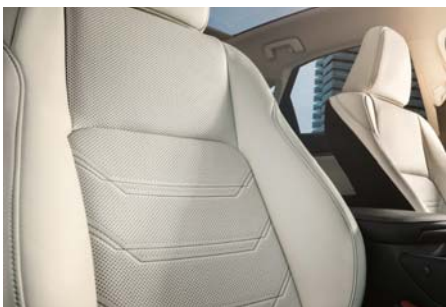
**04. TECHNOLOGY**  
Pages 12-16



**05. ACCESSORIES**  
Page 17



**06. F SPORT**  
Pages 18-19



**07. COLOURS**  
Pages 20-25



**08. EQUIPMENT**  
Pages 26-33



**09. TECHNICAL DATA**  
Pages 34-35





NX 300h





# THE NX 300h

Equipped with Lexus Hybrid Drive – which seamlessly orchestrates power from a 2,5-litre petrol engine and electric motor(s) – the NX 300h is incredibly smooth and quiet, yet as easy to drive as a conventional luxury car. Delivering lively performance, it achieves amazing fuel economy for a crossover of this size.



Stunning Graphite Black bodywork,  
18" alloy wheels.

### 01. 2,5-LITRE PETROL ENGINE

A highly efficient 155 DIN hp 'Atkinson Cycle' 4-cylinder petrol engine, with VVT-i valve control and optimised electronic fuel injection, forms the heart of the NX 300h's Full Hybrid powertrain. Start/Stop technology and exhaust heat recycling help reduce fuel consumption and emissions even further.

### 02. LEXUS SELF-CHARGING HYBRID

No larger than a conventional automatic transmission, Lexus Hybrid Drive's front electric motor, generator and power split mechanism are all housed in one highly compact hybrid transmission. Energy flows are managed by an advanced Power Control Unit that constantly optimises the allocation of power – electric, petrol or a combination of both.

### 03. HYBRID BATTERY

Featuring an innovative split design, and located under the rear seat so as not to encroach on the NX 300h's large luggage space, the hybrid battery provides high power output in relation to its weight. The NX 300h recharges its hybrid battery as required – using electricity generated when driving and braking – thus avoiding the need for any external charging.



01



02



03





## COMFORT

The Comfort grade offers NX 300h owners great looks and connectivity.

17" 10-spoke alloy wheels  
Lexus Safety System +  
Back Monitor

8-speaker Pioneer® audio system  
8" multimedia display, Touch Pad operation  
Bi-LED headlights



## BUSINESS\*

Created for business drivers, the NX 300h Business grade has purposeful looks and equipment to make driving more convenient.

\* Only available on AWD model.

17" 10-spoke alloy wheels  
Intelligent parking sensors (ICS), front and rear  
LED front fog lights with cornering light function  
Tahara upholstery

Smart entry system  
Heated steering  
Lexus Safety System +  
Power back door



## EXECUTIVE\*

The NX 300h Executive grade is sure to turn heads in the car park while delivering a high level of comfort.

\* Only available on AWD model.

18" alloy wheels  
Privacy glass  
Lexus Premium Navigation with 10.3" display  
10-speaker Pioneer® audio system

Leather upholstery  
Front seats, 8-way electrically multi-adjustable  
Lexus Safety System +  
Smartphone wireless charger





### F SPORT

18" alloy wheels, F SPORT design  
 F SPORT front and rear bumper  
 Black F-mesh 'spindle grille'  
 Triple LED headlights  
 Lexus Safety System +  
 F SPORT leather upholstery, steering wheel and gearshift lever  
 10-speaker Pioneer® audio system  
 Lexus Premium Navigation with 10.3" display  
 Front and rear performance dampers

## F SPORT and F SPORT S\*

For those in search of dynamic SUV looks, the F SPORT grades offer features such as an exclusive 'spindle grille', F SPORT wheels and sporty interior details.

\* Only available on AWD model.

### F SPORT S

14-speaker Mark Levinson® Premium Surround system  
 Adaptive Variable Suspension (AVS)  
 Head-Up Display (HUD)  
 Panoramic View Monitor  
 Heated and ventilated front seats  
 Heated rear seats  
 Lexus Premium Navigation with 10.3" display  
 Memory function for driver's seat



18" alloy wheels, two-tone finish  
 Lexus Safety System +  
 Triple LED headlights  
 Leather upholstery  
 Electrically folding rear seat bench

## LUXURY\*

For the ultimate in looks and luxury, choose the NX 300h Luxury grade.

\* Only available on AWD model.

14-speaker Mark Levinson® Premium Surround system  
 Lexus Premium Navigation with 10.3" display  
 Head-Up Display (HUD)



01



02



03



04



05



06



07



08



09



10

### 01. 17" ALLOY WHEELS

Fitted as standard on the Comfort and Business grades these 10-spoke deep gloss wheels are equipped with 225/65 R17 tyres for low running resistance and excellent functionality.

### 02. 18" ALLOY WHEELS

Standard on Executive grade, this intricate u-shaped spoke design creates a sharp and radical profile, while 225/60 R18 tyres complete the bold sports look.

### 03. 18" ALLOY WHEELS

Exclusive to Luxury grade this wheel combines a bright machined finish with a dark metallic coating to create a dynamic impression.

### 04. POWER TAILGATE

Electrically controlled tailgate with locking button ensures convenience.

### 05. SUNROOF

An electric, tilt and slide, glass sunroof adds a feeling of freedom, spaciousness and light to the NX 300h.

### 06. PANORAMIC ROOF

This large glass, factory-fitted panoramic roof adds a feeling of freedom, extra headroom and sunshine to the NX 300h cabin. The panoramic roof is fitted with an electric sliding blind to shade you should the sun become too intense.

### 07. BI-LED / ECO DRL

Not available in Northern Europe

### 08. BI-LED / FULL DRL

Fitted standard on Comfort, Business and Executive grades, offer from full LED illumination of the L-shaped Daytime Running Lights. An Automatic High Beam (AHB) function included.

### 09. TRIPLE LED 'L' BEAMS / FULL DRL

On F SPORT, F SPORT S, and Luxury grades, elegant ultra-small 3-beam LED units have been adopted. These are similar to those which were first used on the Lexus LC Coupé. These lights are combined with Daytime Running Lights which adopt thick-walled inner lenses to create a beautiful crystal glass impression even when not illuminated. AHS function included.

Enhancing its sophisticated looks, sequential front and rear LED indicators make the new NX 300h stand out even more in traffic.

### 10. LED REAR LIGHTS

The rear light cluster combines elegant LEDs arranged in the signature 'L' form, ensuring that at night your car is recognised as a Lexus at a glance. Thick-wall moulding technology gives a crystal appearance, and a strikingly bold presence when not illuminated.



## 01. ERGONOMIC DESIGN

Seat cushion shape and firmness have been optimised to reduce pressure on the sensitive ischial region. For extra comfort, long reach seat adjustments also accommodate larger physiques.

## 02. HEATED / VENTILATED SEATS

In combination with leather upholstery, the driver and front passenger can heat or ventilate (ventilation only on F SPORT S and Luxury grades) their seats. This adds to the sense of luxury, especially in extreme weather conditions.

## 03. FLEXIBLE SPACE / ELECTRIC REAR SEATS

A practical 60:40 split folding rear seat comes standard on all NX 300h models, which allows easy stowage of larger items like a racing bike or surfboard. With all rear seats folded down there is room to carry bulky objects. Standard on Luxury grade is a fully electric folding mechanism, which is operated via a number of conveniently located controls. And rear seat passengers can also partially recline their backrests for added comfort.

## 04. S-FLOW CLIMATE CONTROL

S-Flow intelligently controls the interior climate according to ambient conditions, ensuring excellent comfort and fuel economy.

## 05. LEATHER STEERING WHEEL

A beautifully crafted leather steering wheel features finger rests and a cross-section optimised to fit comfortably in your hands. Integrated switches control – where specified – audio, telephone, multi-information display, Dynamic Radar Cruise Control and Lane Departure Assist.

For added comfort in colder conditions, the steering wheel can be heated (not available on Comfort grade). The steering wheel heater is activated by a switch and turns off automatically after a pre-set time.





01

### 01. MULTIMEDIA DISPLAY

The NX 300h is available with multimedia display, which features a 8-inch screen and touch pad to remotely adjust audio, climate settings or view the energy monitor. Compatible smartphones can be 'mirror linked' to the display. Optionally available with 8-inch Navigation System.

### 02. COLOUR HEAD-UP DISPLAY

Vehicle data is projected in colour directly onto the windscreen. This extra-wide 6,2" Head-Up Display lets you check data like navigation commands or audio settings without taking your eyes off the road ahead.

### 03. 8 OR 10-SPEAKER PIONEER® AUDIO

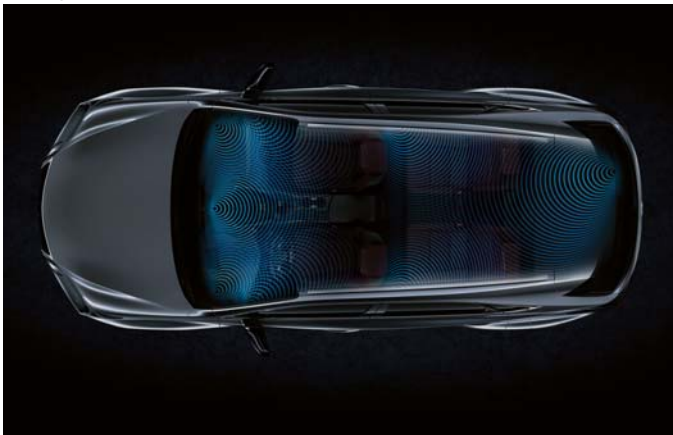
An 8-speaker Pioneer® audio system is fitted as standard. This features an AM/FM/DAB tuner, CD player and Bluetooth® connectivity. The 10-speaker upgrade has a DVD player and offers greater fidelity with 16 cm speakers in the front doors.



02

### 04. MARK LEVINSON®

The 14-speaker Mark Levinson® Premium Surround system with GreenEdge™ technology is tailored to the acoustic properties of the NX 300h. It delivers a peerless 7.1-channel digital home-theatre experience enhanced by Clari-Fi™ that rebuilds sound lost in MP3 digital compression.



03



04



## 01. LEXUS PREMIUM NAVIGATION

With vivid 3D graphics and many mapping options such as 'Point Of Interest search', the latest maps can be updated using 'Over The Air' technology. For added convenience, the system also includes an electronic owner's manual. To enhance your navigation experience, online services are also available like: online traffic, parking search, fuel station search, weather forecast, Google Search or Google Street View.



01

## 02. TOUCH PAD

Touch Pad with Remote Touch Interface lets front seat occupants interact intuitively with the central multimedia display. Ergonomically designed, it is as easy to use as a smartphone or tablet.



02

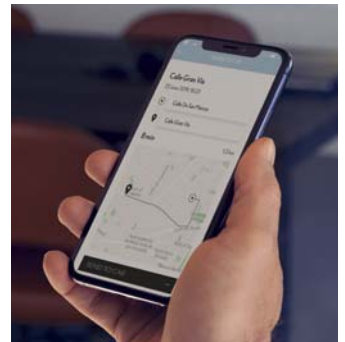
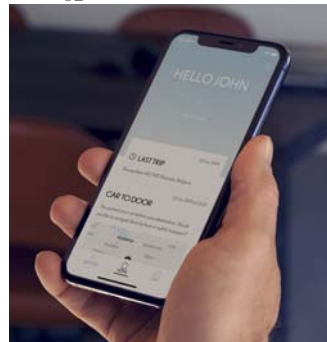
## 03. LEXUS LINK - CONNECTED SERVICES

Connecting to the new Lexus Link app transforms your NX 300h into a connected car. Lexus Link gives you seamless access to connected services like:

- 📍 Driving Analytics: Tracks your journeys, driving style and business trips
- 📍 Find my Car: Locates your Lexus and guides you back to it
- 🚗 Accident Assistant: Depending on crash severity, informs chosen emergency contacts
- 🔧 Service and Maintenance: Helps you manage the care of your NX 300h
- 🔋 Battery Guard: Monitor the charge level of your car's 12V battery for more peace of mind
- 📶 Wi-Fi: Connect up to 10 devices to your in-car Wi-Fi, and monitor your data consumption on the App\*
- 📶 Share to Car: Lets you plan a route on another device and send it to your Lexus, while 'Car to Door' guides you on foot to your final destination once you are parked

## 04. SMARTPHONE INTEGRATION

With Apple CarPlay® and Android Auto®, the NX 300h allows you to easily display and access some of your smartphone's apps on the multimedia display.



03

## 05. WIRELESS CHARGER

Charge compatible smartphones or other electronic devices using the inductive wireless battery charger, conveniently positioned in the NX 300h's centre console box.



04



05



01

### 01. 8 AIRBAGS

In addition to an immensely strong passenger safety cell, occupant protection is provided by eight airbags. The driver and front passenger are protected by 2-stage head airbags, as well as knee and side airbags. Curtain shield airbags run the full length of both cabin sides. All seatbelts are also specified with pre-tensioners.

### 02. TYRE PRESSURE WARNING SYSTEM

Receiving data from a sensor installed in each tyre, the multi-information display tracks tyre pressure data and warns accordingly should pressure drop in one or more tyres.

### 03. WHIPLASH INJURY LESSENING SEATS

The front seats are designed to minimise whiplash inducing neck motion in a rear impact. Reinforced seat frames allow the torso to sink into the seatback, while the placement of the headrest supports the head more effectively.



02



03

### 04. PANORAMIC VIEW MONITOR

For easier driving in confined spaces, four cameras provide a near-360° view around the entire vehicle. A Lexus first, Panoramic View Monitor also creates a virtual 3D view of your NX 300h, with on-screen guides to assist close-quarter manoeuvring in the city.

### 05. BLIND SPOT MONITOR & REAR CROSS TRAFFIC ALERT

Radar devices mounted in the rear bumper detect vehicles in adjacent lanes that are not visible in the door mirrors. If the driver is indicating to change lane and a vehicle enters the blind spot, a warning signal appears in the relevant door mirror(s).

The Rear Cross Traffic Alert function uses Blind Spot Monitor radar to detect vehicles approaching the area behind the vehicle in a car park. When necessary, it alerts you with a buzzer and a visual display in the door mirrors.



04



05



## 01. LEXUS SAFETY SYSTEM +

Standard on the NX 300h, Lexus Safety System + includes the following features:

## 02. PRE-COLLISION SYSTEM & PEDESTRIAN DETECTION

The Pre-Collision System on the NX 300h can now even detect pedestrians at night and bicycles during daytime. To achieve this, the camera sensitivity and dynamic range have been enhanced to help reduce accidents in the dark, for example, when a pedestrian in front of an oncoming vehicle is difficult to see due to the vehicle's lights. Furthermore, the millimetre-wave radar detection area angle has been widened, enabling bicycles to be detected. If the system judges that the possibility of a collision is high, the brakes are automatically applied to support collision avoidance, or reduce damage in the event of a collision.

## 03. DYNAMIC RADAR CRUISE CONTROL

The system uses the millimetre-wave radar sensor and a camera to detect the vehicle in front and provide control to maintain an appropriate distance. If the vehicle in front comes to a halt, the system will stop the NX 300h. When the vehicle moves off again, the NX will start off and continue following.

## 04. LANE DEPARTURE ALERT / LANE TRACING ASSIST

Lane Departure Alert (LDA) uses a camera in the front windscreen to monitor your position in lane. If you start drifting out of lane, LDA will activate a warning buzzer and give brief corrective steering input.

On F SPORT and Luxury models, Lane Tracing Assist goes one step further and is also capable of providing more assistance when driving around bends with a tighter radius.

## 05. AUTOMATIC HIGH BEAM / ADAPTIVE HIGH-BEAM SYSTEM

Automatic High Beam detects oncoming vehicles at night and automatically dips the high beam headlights. This reduces the chance of accidentally dazzling other drivers and lets you concentrate on the road ahead.

On F SPORT and Luxury models, the Adaptive High-beam System also prevents the NX 300h from dazzling other road users. Independent LED chips in the headlights are enabled/disabled for precise control of the illuminated and non-illuminated areas.

## 06. ROAD SIGN ASSIST

The Road Sign Assist (RSA) system available on the NX 300h recognises traffic signs and provides information to the driver via the multi-information display. When linked to Dynamic Radar Cruise Control, the crossover's speed setting can be quickly reset in accordance with the speed limit recognised by RSA.



01



02



03



04



05



06

Under no circumstances should Lexus Safety System + be used to replace your driving skills at the wheel. Please read the instructions very carefully before operating the system and remember the driver is always responsible for safety. Details of specifications and equipment are subject to change to suit local conditions and requirements. Please enquire at your local Lexus Authorised Retailer.



01

## 01. EXTREMELY STRONG CHASSIS, ADAPTIVE VARIABLE SUSPENSION

With its sophisticated chassis, suspension and steering, the NX 300h is incredibly smooth and refined to drive. Advanced laser screw welding and adhesive bonding techniques make the NX 300h extremely rigid. This has produced a crossover of great strength, which rewards drivers with superior handling characteristics. Equipped with compact MacPherson strut front suspension and sophisticated double wishbone rear suspension, the NX 300h delivers outstanding road holding, sedan-like cornering characteristics and superb straight-line stability. For a more engaging drive, optional Adaptive Variable Suspension intelligently controls the damping force on all four wheels. This not only improves ride comfort, but also increases handling stability.



02

## 02. ADVANCED AERODYNAMICS

The NX 300h has excellent aerodynamics, thanks to a near-flat underbody and large rear spoiler. To reduce the overall drag coefficient, Lexus engineers also redesigned the door mirrors. These measures not only enhance stability and handling, they also improve fuel efficiency and reduce wind noise.

## 03. DRIVE MODE SELECT

Located on the centre console, next to the gearshift, Drive Mode Select allows drivers to choose between Eco, Normal, Sport S and Sport S+ modes, for maximising the car's efficiency, dynamism or refinement.

## 04. E-FOUR

On NX 300h All-Wheel Drive models, E-FOUR delivers seamless performance and confident traction over rougher terrain. The innovative E-FOUR drivetrain features the addition of a 68 DIN hp electric motor mounted on the rear axle, which delivers instant torque on demand.



03



04

## 05. HILL-START ASSIST CONTROL

Hill-start Assist Control maintains brake pressure to help prevent the NX 300h from moving backwards when starting off on a slope. Hill-start Assist Control also minimises wheel-spin on slippery inclines.



05



## 01. TEXTILE FLOOR MATS

Luxurious black textile mats made of acuvellour to complement the sound absorbing qualities of your car's carpets. The driver's mat has a safety fixing to prevent it from slipping.

## 02. FRONT SKIRT

Designed to enhance your car's look of power and individuality. The Lexus front skirt integrates with, and complements, the NX 300h's front bumper.

## 03. REAR SKIRT

With its wrap-around styling, the Lexus rear skirt extends the depth of the NX's rear bumper to establish a dynamic, sporty appearance.

## 04. DETACHABLE TOWING HITCH\*

Integrates with the NX 300h's chassis to evenly distribute the pulling and braking forces of towing, thus minimising the risk of stress damage to your crossover. It has a 1500 kg towing capacity and the hitch removes when not required. The purpose-designed wiring kit includes safety buffers to shield your car's electrics against faults in the trailer's system.

\* Not available on NX 300h FWD models.

## 05. BOOT LINER

Made of tough, flexible plastic with a non-slip surface pattern and a raised lip around the edges to comprehensively protect the luggage space carpet against mud, dirt, sand and liquids.

## 06. 17" WINTER ALLOY WHEELS

Lexus winter alloy wheels are purpose designed to equip your NX for poor road conditions and low temperature driving while maintaining a prestige appearance.

## 07. 18" ALLOY WHEELS

The black mirror chrome finish and high performance 10-spoke design create an unmistakable look of urban sophistication.

## 08. 18" SILVER MACHINED FACE ALLOY WHEELS (5 DOUBLE-SPOKE)

A sports inspired multi-spoke design highlighted by its reflective silver finish and machined face on alternating spokes.

## 09. 18" BLACK MACHINED FACE ALLOY WHEELS (5 DOUBLE-SPOKE)

Sporty multi-spoke design in a gloss black finish with individual spokes machined to expose the underlying alloy.



01



02



03



04



05



06



07



08



09



01

## 01. F SPORT DESIGN

A bolder 'spindle grille' with an exclusive mesh pattern and Jet Black surround combine to accentuate the NX 300h F SPORT's dynamic looks. Further exclusive details like an F SPORT badge (incorporating the curves of the Fuji Speedway), black door mirrors, distinctive 18" F SPORT alloy wheels, rear bumper and spoiler all express the car's strong character.

## 02. 18" F SPORT ALLOYS

Exclusive to F SPORT models, with a dark premium metallic finish, these highly distinctive 5-twin-spoke alloy wheels underline the vehicle's dynamic character.

## 03. F SPORT INTERIOR

The F SPORT interior features exclusive new leather upholstery colours Flare Red and Mustard Yellow, together with unique ornamentation and stitching. Exclusive new F SPORT seats feature 'integrated foaming' technology for added lateral support while cornering. Aluminium inlays perfectly complement the beautifully crafted F SPORT steering wheel, inspired by that of our iconic LFA supercar. Finished in perforated leather, the F SPORT gearshift design matches the steering wheel to create an exciting sports look. Drilled aluminium pedals add further excitement to the interior.

## 04. G-SENSOR

For a more engaging drive, a G-Sensor displays the NX 300h F SPORT's lateral and longitudinal G-forces in the multi-information display. The screen also displays the steering angle, throttle position, and hydraulic brake pressure.



02



03



04





---

## DEVELOPING A NEW LEXUS PAINT COLOUR IS BOTH COMPLEX AND TIME CONSUMING

---



Lexus designers never use off-the-shelf colours, preferring instead to develop their own, from scratch, a process that can take up to two years. The Lexus paint palette totals some 30 different colours including metallic finishes like Sonic White and Sonic Titanium.

There are no shortcuts to creating a new Lexus colour: A designer's decision comes only after going through hundreds of samples. "When developing a new colour I see so many shades of paint that I sometimes can't see straight at the end of the day," says Megumi Suzuki, one of our most experienced colour designers. To do her job, it takes a grasp of chromogenics and a keen eye.

"Every time I meet someone or walk into a shop or go to someone's house, I check out colours and materials," she says. "There are a lot of people like me in our division."

Even after a colour has been decided upon, there's plenty to do. At various stages during development, Suzuki had to enlist a small army of experts: Lab technicians who mix the paint, clay sculptors, engineers and the assembly-line paint shop crew who would give each car a flawless, uniform coat. Every few weeks Kansai Paint (a Lexus paint supplier) produces a new batch, and Lexus designers give the samples a thorough look-over, bending the test panels to mimic the contours of a car. All are scrutinised indoors and outdoors, under floodlights, in sunlight, shade and overcast conditions, and at different times of the day and months of the year.

Selecting the final colour is not easy. A colour that is dazzling on a summer morning can appear sickly in the shade or under showroom lights. Designers also have to contend with the vagaries of their own preferences. "The odd thing about colour is that your perception of it can change depending on the season, how you feel that day and the trends you're seeing," says Suzuki.



**F WHITE** | 0831



**SONIC WHITE** | 085



**SONIC TITANIUM** | 1J7



**MERCURY GREY** | 1H9



**BLACK** | 2122



**GRAPHITE BLACK** | 223



**MORELLO RED** | 3R1



**TERRANE KHAKI** | 6X4



**BLAZING CARNELIAN** | 4Y1



**SOLAR FLARE** | 4W71



**CELESTIAL BLUE** | 8Y6



**SAPPHIRE BLUE** | 8X11



<sup>1</sup> Exclusive to F SPORT and F SPORT S

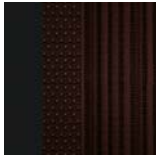
<sup>2</sup> Solid colour

Please note: due to printing variances, actual paintwork colours may vary slightly from those illustrated.

## FABRIC<sup>1</sup>



Black



Dark Rose

## TAHARA TRIM<sup>2</sup>



Black



Rich Cream



White Ochre

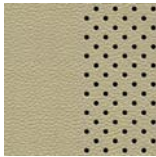


Dark Rose

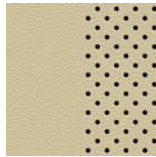
## LEATHER<sup>3</sup>



Black



Rich Cream



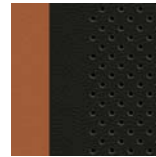
White Ochre



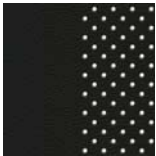
Ochre



Dark Rose


Sunflare Brown  
Accent

## F SPORT LEATHER<sup>4</sup>



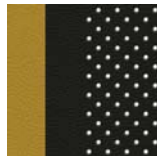
Black



White

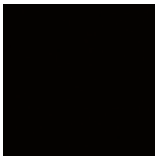


Flare Red

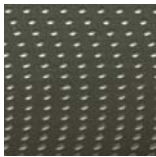


Mustard Yellow

## INLAYS<sup>5</sup>



Piano Black



Silver



Shimamoku

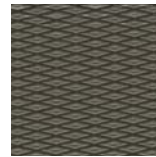


Bamboo

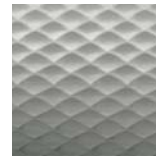


Dark Brown

## F SPORT AND F SPORT S INLAYS<sup>6</sup>



Carbon (F SPORT)


Naguri-Style Aluminium  
(F SPORT S)

<sup>1</sup> Fabric upholstery is standard on Comfort grade. Dark Rose is not Available in Northern Europe.

<sup>2</sup> Tahara trim is standard on Business grade. White Ochre can be ordered in combination with either Black or matching White Ochre instrument panel and door panels.

<sup>3</sup> Leather is standard on Executive and Luxury grades. White Ochre and Rich Cream can be ordered in combination with either Black or matching instrument panel and door panels.

<sup>4</sup> F SPORT leather in a unique design and exclusive colours is standard on F SPORT and F SPORT S.

<sup>5</sup> Piano Black inlays are standard on Comfort grade. Silver inlays are standard on Business and Executive grades. Dark Brown inlays is available only for Executive grade, combination with Sunflare Brown interior.

<sup>6</sup> Shimamoku or bamboo inlays are standard on Luxury.

<sup>6</sup> Carbon inlays are standard on F SPORT, while Naguri-Style Aluminium is standard on F SPORT S.

The images on the following 3 pages illustrate a selection of the interior combinations available. Your local Lexus Authorised Retailer will be pleased to provide you with any further help.





01



02

- 01 Black fabric with Piano Black inlays  
(Comfort)
- 02 Dark Rose Tahara trim with  
Silver inlays (Business)



03



04



05

- 03 Black leather with Shimamoku inlays (Luxury)
- 04 Rich Cream leather with Shimamoku inlays (Luxury)
- 05 Sunflare Brown Accent leather with Dark Brown inlays (Executive)



06



07



08

- 06 Black F SPORT leather with Carbon inlays (F SPORT)  
07 Flare Red F SPORT leather with Naguri-Style Aluminium inlays (F SPORT S)  
08 White F SPORT leather with Naguri-Style Aluminium inlays (F SPORT S)



EXTERIOR	COMFORT	BUSINESS	EXECUTIVE
Auto-levelling headlights	■	■	■
Cornering lights	—	■	■
Daytime running lights, LED	■	■	■
Door mirrors, electrically adjustable and folding, heated	■	■	■
Door mirrors, electrically adjustable with memory, auto-folding, electro chromatic (auto-dimming), heated with reverse tilt function	—	—	—
Door mirrors, integral turn signal indicators	■	■	■
F SPORT logos, front fenders	—	—	—
F-mesh Lexus signature grille	—	—	—
Front bumper, F SPORT design	—	—	—
Front fog lights	—	■	■
Headlight cleaners	■	■	■
Headlights, bi-LED	■	■	■
Headlights, triple LED	—	—	—
Integral roof rails	■	■	■
Intelligent parking assist sensors (ICS), front and rear	—	—	—
Lexus signature grille	■	■	■
Parking assist sensors, front and rear	—	■	■
Privacy glass	—	—	■
Rain sensing windscreen wipers	■	■	■
Rear bumper, F SPORT design	—	—	—
Rear combination lights, LED	■	■	■
Sequential indicators	■	■	■
Tailgate, electrically operated	—	■	■
<b>WHEELS</b>			
17" alloy wheels, 10-spoke design, 225/65 R17 tyres	■	■	—
18" alloy wheels, 5-twin-spoke design, 225/60 R18 tyres	—	—	■
18" alloy wheels, F SPORT design, 5-twin-spoke, 235/55 R18 tyres	—	—	—
18" alloy wheels, two-tone finish, 225/60 R18 tyres	—	—	—

■ Available as standard.  
 ○ Available as an option.  
 □ Available as part of a pack.  
 — Not available.

EXTERIOR	F SPORT	F SPORT S	LUXURY
Auto-levelling headlights	■	■	■
Cornering lights	■	■	■
Daytime running lights, LED	■	■	■
Door mirrors, electrically adjustable and folding, heated	—	—	—
Door mirrors, electrically adjustable with memory (memory only on F SPORT S and Luxury grades), auto-folding, electro chromatic (auto-dimming), heated with reverse tilt function	■	■	■
Door mirrors, integral turn signal indicators	■	■	■
F SPORT logos, front fenders	■	■	—
F-mesh Lexus signature grille	■	■	—
Front bumper, F SPORT design	■	■	—
Front fog lights	■	■	■
Headlight cleaners	■	■	■
Headlights, bi-LED	—	—	—
Headlights, triple LED	■	■	■
Integral roof rails	■	■	■
Intelligent parking assist sensors (ICS), front and rear	—	■	■
Lexus signature grille	—	—	■
Parking assist sensors, front and rear	■	■	■
Privacy glass	■	■	■
Rain sensing windscreen wipers	■	■	■
Rear bumper, F SPORT design	■	■	—
Rear combination lights, LED	■	■	■
Sequential indicators	■	■	■
Tailgate, electrically operated	■	■	■
<b>WHEELS</b>			
17" alloy wheels, 10-spoke design, 225/65 R17 tyres	—	—	—
18" alloy wheels, 5-twin-spoke design, 225/60 R18 tyres	—	—	—
18" alloy wheels, F SPORT design, 5-twin-spoke, 235/55 R18 tyres	■	■	—
18" alloy wheels, two-tone finish, 225/60 R18 tyres	—	—	■

ACTIVE SAFETY AND DRIVING DYNAMICS	COMFORT	BUSINESS	EXECUTIVE
Active brake lights	■	■	■
Adaptive High-beam System (AHS)	—	—	—
Adaptive Variable Suspension (AVS)	—	—	—
Anti-lock Braking System (ABS)	■	■	■
Automatic High Beam (AHB)	■	■	■
Blind Spot Monitor (BSM) with Rear Cross Traffic Alert (RCTA)	—	—	—
Drive Mode Select (Eco - Normal - Sport)	■	■	■
Drive Mode Select (Eco - Normal / Custom - Sport S / Sport S+)	—	—	—
Dynamic Radar Cruise Control (DRCC), all-speed	■	■	■
Electronic Parking Brake (EPB)	■	■	■
EV (Electric Vehicle) mode	■	■	■
Hill-start Assist Control (HAC)	■	■	■
Lane Departure Alert (LDA) with Sway Warning function	■	■	■
Lane Tracing Assist (LTA)	—	—	—
Pre-Collision System (PCS)	■	■	■
Performance dampers, front and rear	—	—	—
Road Sign Assist (RSA)	■	■	■
Traction Control (TRC)	■	■	■
Vehicle Stability Control (VSC)	■	■	■
<b>PASSIVE SAFETY</b>			
Airbag cut-off switch, front passenger	■	■	■
Airbags, driver and front passenger; head, side and knee / full-length curtain shield	■	■	■
ISOFIX attachment, outer rear seats	■	■	■
Seatbelt pre-tensioners, front seats	■	■	■
Seatbelt pre-tensioners, rear seats	■	■	■
<b>SECURITY</b>			
Anti-theft system - siren / intrusion sensor / inclination sensor / glass breakage sensor	■	■	■
Auto door locking	■	■	■
Double door lock	■	■	■

■ Available as standard.  
 ○ Available as an option.  
 □ Available as part of a pack.  
 — Not available.



ACTIVE SAFETY AND DRIVING DYNAMICS	F SPORT	F SPORT S	LUXURY
Active brake lights	■	■	■
Adaptive High-beam System (AHS)	■	■	■
Adaptive Variable Suspension (AVS)	—	■	■
Anti-lock Braking System (ABS)	■	■	■
Automatic High Beam (AHB)	—	—	—
Blind Spot Monitor (BSM) with Rear Cross Traffic Alert (RCTA)	—	■	■
Drive Mode Select (Eco - Normal - Sport)	■	—	—
Drive Mode Select (Eco - Normal / Custom - Sport S / Sport S+)	—	■	■
Dynamic Radar Cruise Control (DRCC), all-speed	■	■	■
Electronic Parking Brake (EPB)	■	■	■
EV (Electric Vehicle) mode	■	■	■
Hill-start Assist Control (HAC)	■	■	■
Lane Departure Alert (LDA) with Sway Warning function	—	—	—
Lane Tracing Assist (LTA)	■	■	■
Pre-Collision System (PCS)	■	■	■
Performance dampers, front and rear	■	■	—
Road Sign Assist (RSA)	■	■	■
Traction Control (TRC)	■	■	■
Vehicle Stability Control (VSC)	■	■	■
<b>PASSIVE SAFETY</b>			
Airbag cut-off switch, front passenger	■	■	■
Airbags, driver and front passenger; head, side and knee / full-length curtain shield	■	■	■
ISOFIX attachment, outer rear seats	■	■	■
Seatbelt pre-tensioners, front seats	■	■	■
Seatbelt pre-tensioners, rear seats	■	■	■
<b>SECURITY</b>			
Anti-theft system - siren / intrusion sensor / inclination sensor / glass breakage sensor	■	■	■
Auto door locking	■	■	■
Double door lock	■	■	■

AUDIO, COMMUNICATION & INFORMATION	COMFORT	BUSINESS	EXECUTIVE
8" multimedia display	■	■	—
10.3" multimedia display	—	—	■
8-speaker Pioneer® audio system	■	■	—
10-speaker Pioneer® audio system	—	—	■
14-speaker Mark Levinson® Premium Surround system	—	—	—
2 USB ports and AUX socket	■	■	■
Active Sound Control (ASC)	—	—	—
Analogue clock with GPS function	—	■	■
Antenna, shark fin design	■	■	■
Bluetooth® mobile phone and audio connectivity	■	■	■
CD player, single slot	■	■	—
DVD player, single slot	—	—	■
Head-Up Display (HUD)	—	—	—
Lexus Link Connected Services	■	■	■
Lexus Navigation	—	○	—
Lexus Premium Navigation	—	—	■
Panoramic View Monitor	—	—	—
Parking assist monitor with on-screen guides	■	■	■
Smartphone integration (Apple CarPlay®, Android Auto®)	■	■	■
Steering wheel mounted controls - audio / display / phone / voice	■	■	■
Steering wheel mounted controls - audio / display / phone / voice / DRCC / LDA	■	■	■
Touch Pad operation for central display	■	■	■
Digital Audio Broadcasting (DAB) radio	■	■	■
Wireless charger	—	—	■

■ Available as standard.  
 ○ Available as an option.  
 ■ Available as part of a pack.  
 — Not available.

AUDIO, COMMUNICATION & INFORMATION	F SPORT	F SPORT S	LUXURY
8" multimedia display	—	—	—
10.3" multimedia display	■	■	■
8-speaker Pioneer® audio system	—	—	—
10-speaker Pioneer® audio system	■	—	—
14-speaker Mark Levinson® Premium Surround system	—	■	■
2 USB ports and AUX socket	■	■	■
Active Sound Control (ASC)	■	■	—
Analogue clock with GPS function	■	■	■
Antenna, shark fin design	■	■	■
Bluetooth® mobile phone and audio connectivity	■	■	■
CD player, single slot	—	—	—
DVD player, single slot	■	■	■
Head-Up Display (HUD)	—	■	■
Lexus Link Connected Services	■	■	■
Lexus Navigation	—	—	—
Lexus Premium Navigation	■	■	■
Panoramic View Monitor	—	■	■
Parking assist monitor with on-screen guides	■	■	■
Smartphone integration (Apple CarPlay®, Android Auto®)	■	■	■
Steering wheel mounted controls - audio / display / phone / voice	■	■	■
Steering wheel mounted controls - audio / display / phone / voice / DRCC / LDA	■	■	■
Touch Pad operation for central display	■	■	■
Digital Audio Broadcasting (DAB) radio	■	■	■
Wireless charger	■	■	■



INTERIOR COMFORT & CONVENIENCE	COMFORT	BUSINESS	EXECUTIVE
3-spoke, leather trimmed steering wheel with paddle shift controls	■	■	■
3-spoke, perforated leather trimmed steering wheel with paddle shift controls	—	—	—
Card key	—	—	—
Drilled aluminium pedals	—	—	—
Electrically operated windows, front and rear	■	■	■
Electronic climate control, 2-zone with S-Flow technology	■	■	■
Front centre armrest with storage box and 2 cup holders	■	■	■
Front seats, 6-way manually adjustable	■	■	—
Front seats, 8-way electrically adjustable	—	—	■
Front seat lumbar support, electrically adjustable, 2-way (driver)	—	—	—
Front seats, F SPORT design	—	—	—
Glass sunroof, electric tilt/slide	—	—	○
Heated and ventilated front seats	—	—	—
Heated front seats	■	■	■
Heated rear seats	—	—	—
Heated steering wheel	—	■	■
Illuminated entry system	■	■	■
Inlays, Bamboo	—	—	—
Inlays, Carbon	—	—	—
Inlays, Naguri-Style Aluminium	—	—	—
Inlays, Piano Black	■	—	—
Inlays, Shimamoku	—	—	—
Inlays, Silver	—	■	■
Leather trimmed gearshift knob	■	■	■
Luggage holding belt	■	■	■
Memory function for driver's seat	—	—	—
Panoramic sunroof	—	—	○
Perforated leather trimmed gearshift knob	—	—	—
Rear centre armrest with storage space and 2 cup holders	■	■	■
Rear seat bench, 60:40 split-folding	■	■	■
Rear seat bench, 60:40 split-folding, electric operation	—	—	—
Rear-view mirror, manual dimming adjustment	—	—	—
Rear-view mirror, electro chromatic (auto-dimming)	■	■	■
Scuff plates, standard design	■	■	—
Scuff plates, F SPORT design	—	—	—
Scuff plates, upgraded design	—	—	■
Smart entry system	—	■	■
Steering column, manually multi-adjustable	■	■	■
Steering column, electrically multi-adjustable	—	—	—
Tyre repair kit	■	■	■
Upholstery, Fabric	■	—	—
Upholstery, Tahara trim	—	■	—
Upholstery, F SPORT leather	—	—	—
Upholstery, leather	—	—	■
Wireless door lock	■	■	■

■ Available as standard.  
 ○ Available as an option.  
 ■ Available as part of a pack.  
 — Not available.

INTERIOR COMFORT & CONVENIENCE	F SPORT	F SPORT S	LUXURY
3-spoke, leather trimmed steering wheel with paddle shift controls	—	—	■
3-spoke, perforated leather trimmed steering wheel with paddle shift controls	■	■	—
Card key	—	—	■
Drilled aluminium pedals	■	■	—
Electrically operated windows, front and rear	■	■	■
Electronic climate control, 2-zone with S-Flow technology	■	■	■
Front centre armrest with storage box and 2 cup holders	■	■	■
Front seats, 6-way manually adjustable	—	—	—
Front seats, 8-way electrically adjustable	■	■	■
Front seat lumbar support, electrically adjustable, 2-way (driver)	■	■	■
Front seats, F SPORT design	■	■	—
Glass sunroof, electric tilt/slide	○	○	○
Heated and ventilated front seats	—	■	■
Heated front seats	■	■	■
Heated rear seats	—	■	■
Heated steering wheel	■	■	○
Illuminated entry system	■	■	■
Inlays, Bamboo	—	—	■
Inlays, Carbon	■	—	—
Inlays, Naguri-Style Aluminium	—	■	—
Inlays, Piano Black	—	—	—
Inlays, Shimamoku	—	—	■
Inlays, Silver	—	—	—
Leather trimmed gearshift knob	—	—	■
Luggage holding belt	■	■	■
Memory function for driver's seat	—	■	■
Panoramic sunroof <sup>1</sup>	—	○	○
Perforated leather trimmed gearshift knob	■	■	—
Rear centre armrest with storage space and 2 cup holders	■	■	■
Rear seat bench, 60:40 split-folding	■	■	■
Rear seat bench, 60:40 split-folding, electric operation	—	—	■
Rear-view mirror, manual dimming adjustment	—	—	—
Rear-view mirror, electro chromatic (auto-dimming)	■	■	■
Scuff plates, standard design	—	—	—
Scuff plates, F SPORT design	■	■	—
Scuff plates, upgraded design	—	—	■
Smart entry system	■	■	■
Steering column, manually multi-adjustable	—	—	—
Steering column, electrically multi-adjustable	■	■	■
Tyre repair kit	■	■	■
Upholstery, Fabric	—	—	—
Upholstery, Tahara trim	—	—	—
Upholstery, F SPORT leather	■	■	—
Upholstery, leather	—	—	■
Wireless door lock	■	■	■

<sup>1</sup> If panoramic sunroof is specified the otherwise standard fitment roof rails are not supplied due to technical reasons.

## TECHNICAL DATA

ENGINE		NX 300h FWD (AWD)
Capacity (cm <sup>3</sup> )		2494
Cylinders / Valves		L4/ 16
Maximum power (DIN hp @ rpm)		155 @ 5700
Maximum power (kW @ rpm)		114 @ 5700
Maximum torque (Nm @ rpm)		210 @ 4200 - 4400
ELECTRIC MOTOR(S)		
Type		AC synchronous, permanent magnet
Maximum power (DIN hp)	front / rear	143 / - (143 / 68)
Maximum power (kW)	front / rear	105 / - (105 / 50)
Maximum torque (Nm)	front / rear	270 / - (270 / 139)
TRANSMISSION		
Type		Electronic-Continuously Variable Transmission
Drive		Front-Wheel Drive (All-Wheel Drive)
TOTAL SYSTEM OUTPUT		
Total power (DIN hp)		197
Total power (kW)		145
PERFORMANCE		
Maximum speed (km/h)		180
Acceleration 0-100 km/h (s)		9,2
FUEL CONSUMPTION* (l/100km)		
Combined		7,1 (from 7,2 to 7,6)
CO <sub>2</sub> EMISSIONS* (g/km)		
Combined		160 (from 163 to 172)
EMISSION STANDARD		
Euro Class		Euro 6d-ISC
WEIGHTS (kg)		
Gross vehicle		2230 (2395)
Kerb weight (min. - max.)		1840 (1785 - 1905)
CAPACITIES**		
Luggage volume - rear seats upright, loaded to luggage cover (l)		475 / 555
Luggage volume - rear seats folded down, loaded to the roof (l)		1520 / 1600
Fuel tank capacity (l)		56
Towing capacity max. unbraked (kg)		750
Towing capacity max. braked (kg)		1500

\* The fuel consumption and CO<sub>2</sub> values are measured in a controlled environment on a representative production model, in accordance with the requirements of the new WLTP European Regulation EC 2017/1151 and its applicable amendments. For each individual vehicle configuration, the final fuel consumption and CO<sub>2</sub> values may be calculated based on the ordered optional equipment. The fuel consumption and CO<sub>2</sub> values of your vehicle may vary from those measured or calculated values, as driving behaviour as well as other factors (such as road conditions, traffic, vehicle condition, tyre pressure, load, number of passengers, etc.) have an influence on a car's fuel consumption and CO<sub>2</sub> emissions. For more information regarding the new WLTP test method, please visit: [www.lexus.eu/wltp#nedc](http://www.lexus.eu/wltp#nedc)

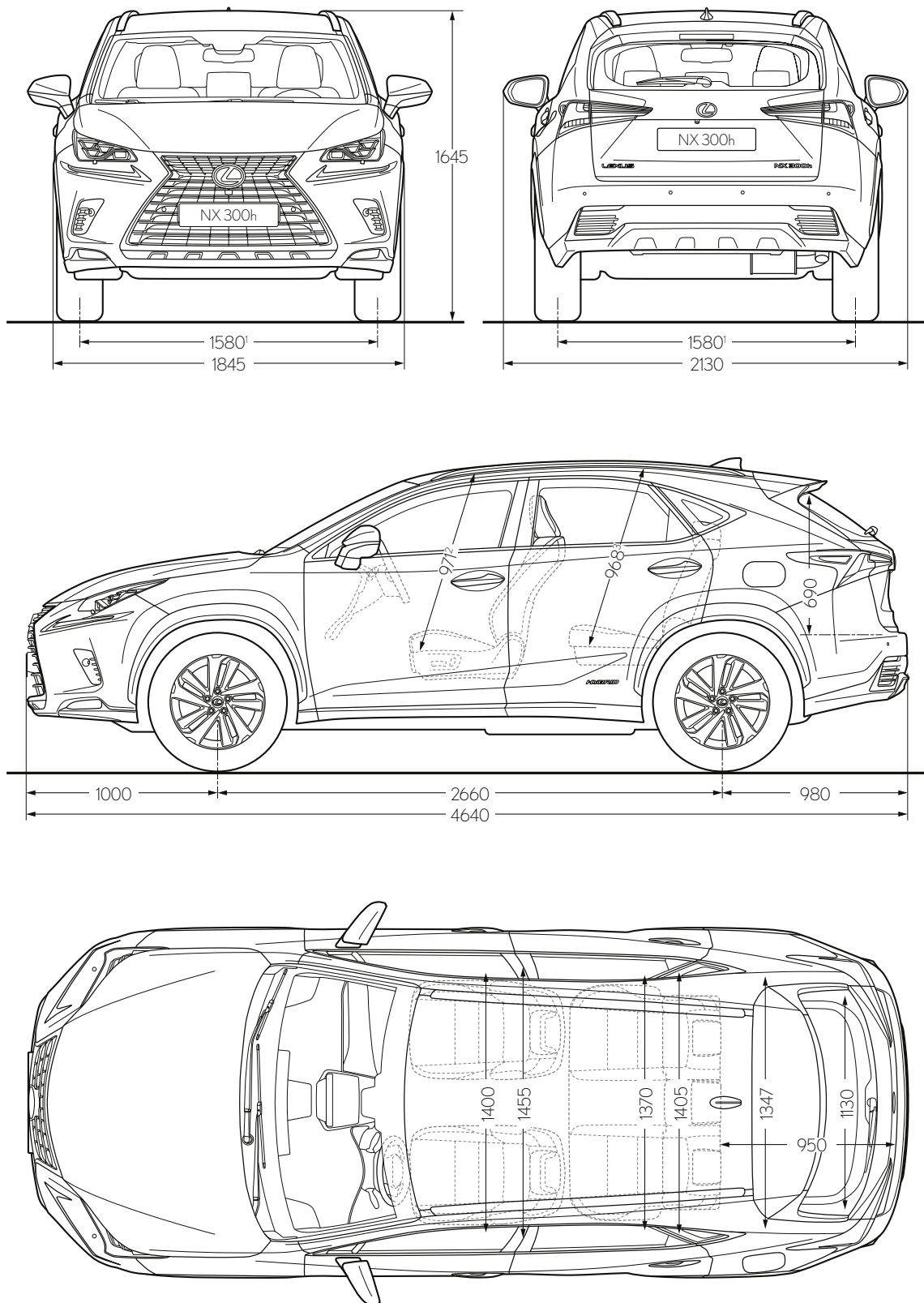
The combined Correlated NEDC fuel consumption from 5,6 to 6,0 l/100km and combined CO<sub>2</sub> from 129 to 137 g/km values are measured in a controlled environment, in accordance with the requirements of Directive EEC 2017/1152 incl. its amendments, on a vehicle with European Standard equipment.

\*\* Luggage volume is calculated as per the VDA method. 1st figure is for the vehicle specified with a temporary spare wheel. 2nd figure is for the vehicle specified with a tyre repair kit. All figures quoted include the under floor storage area in the luggage compartment.

Please note: further Technical Data, including any updates, can be found at [www.lexus.ee](http://www.lexus.ee) / [www.lexus.lt](http://www.lexus.lt) / [www.lexus.lv](http://www.lexus.lv) / [www.lexus.fi](http://www.lexus.fi) / [www.lexus.se](http://www.lexus.se) / [www.lexus.no](http://www.lexus.no) / [www.lexus.dk](http://www.lexus.dk)



## TECHNICAL DATA



1 When specified with 235/55 R18 tyres, both the front and rear track figures are 1570.

2 When specified with a sunroof the front headroom figure is 950 and when specified with a panoramic roof it is 976.

3 When specified with a sunroof the rear headroom figure is 967 and when specified with a panoramic roof it is 938.

Please note: the dimensions illustrated / noted are measured in millimetres.

**More about Lexus:**

**[lexus.lv/NX](https://lexus.lv/NX)**

**[lexus.lt/NX](https://lexus.lt/NX)**

**[lexus.ee/NX](https://lexus.ee/NX)**

**[lexus.fi/NX](https://lexus.fi/NX)**

**[lexus.se/NX](https://lexus.se/NX)**

**[lexus.no/NX](https://lexus.no/NX)**

**[lexus.dk](https://lexus.dk)**

**[youtube.com/LexusEurope](https://youtube.com/LexusEurope)**

**[twitter.com/Lexus\\_EU](https://twitter.com/Lexus_EU)**

---

© 2020 Lexus Europe\* reserves the right to alter any details of specifications and equipment without notice. Details of specifications and equipment are also subject to change to suit local conditions and requirements. Please enquire at your local Lexus Authorised Retailer of any such changes that might be required for your area.

Note: Vehicles pictured and specifications detailed in this brochure may vary from models and equipment available in your area. Vehicle body colour might differ slightly from the printed photos in this brochure.

For further information please visit our website: [www.lexus.eu](https://www.lexus.eu)

Taking care of the environment is a priority for Lexus. We take many measures to ensure that during the lifecycles of our vehicles – from design, production, distribution, sales and service to end-of-life – their environmental impact is minimised. Your retailer will be happy to provide more information on end-of-life vehicle requirements.

\* Lexus Europe is a division of Toyota Motor Europe NV/SA.

Printed in Europe, July 2020

